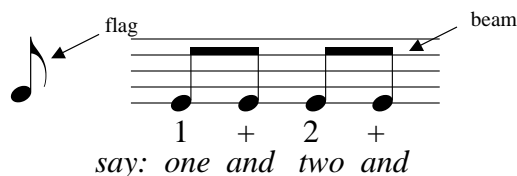


Lesson 11: Time Signatures - $\frac{2}{4}$

An eighth note has a value of one half of a beat. When by itself, an eighth note looks like a quarter note with a flag. When with other eighth notes, the notes eighth notes are connected together with a beam.



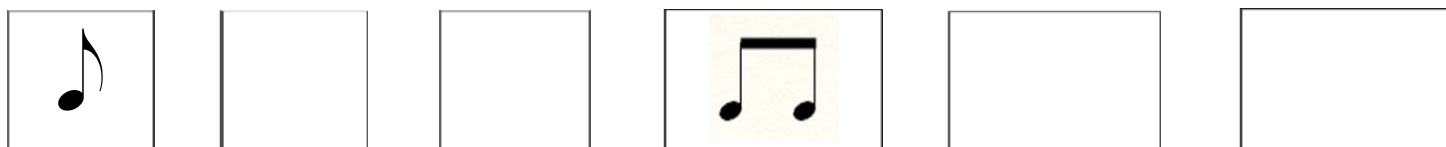
In $\frac{2}{4}$ time there are two beats in each measure.
The quarter note gets one beat.

An eighth note (♩) = 1/2 beat

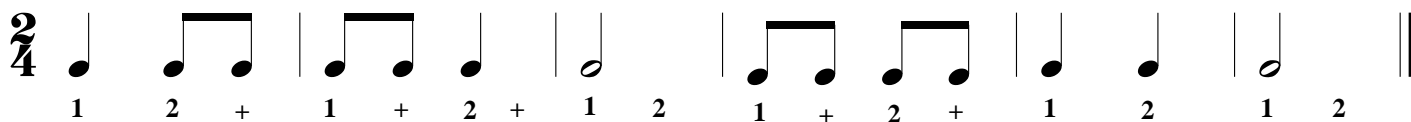
A quarter note (♩) = 1 beat

A half note (♩) = 2 beats

1. Practice drawing eighth notes in the following boxes. An example of each is given.



2. Count the beats out loud, then tap the rhythm.



3. Write the beats below the notes. Then count the beats out loud while tapping the rhythm.



4. Write a $\frac{2}{4}$ time signature after the treble clef. Write the beats below the notes. Then count the beats out loud while tapping the rhythm.



5. Write a $\frac{2}{4}$ time signature after the treble clef. Write the beats below the notes. Draw the missing bar lines.

